

Recorded Steps

This file contains all the steps and information that was recorded to help you describe the recorded steps to others. Before sharing this file, you should verify the following:

- The steps below accurately describe the recording.
- There is no information below or on any screenshots that you do not want others to see.

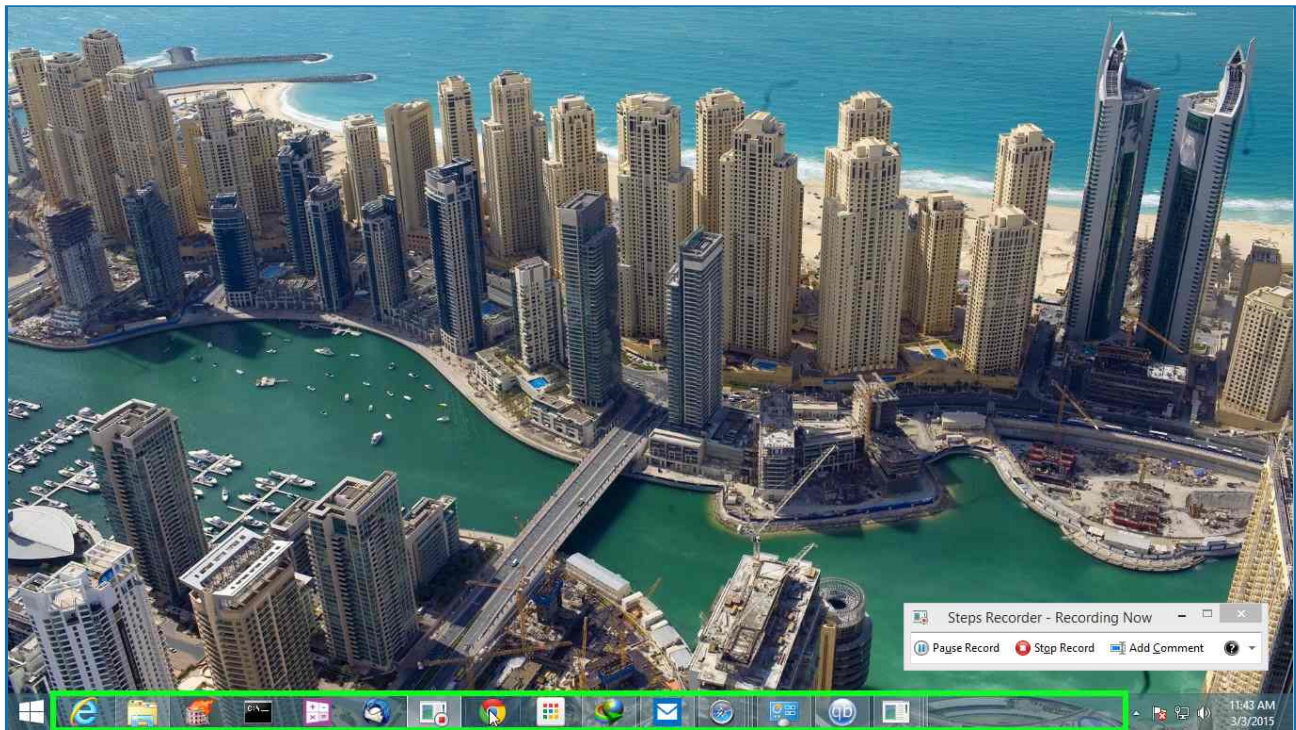
Passwords or any other text you typed were not recorded, except for function and shortcut keys that you used. You can do the following:

- [Review the recorded steps](#)
- [Review the recorded steps as a slide show](#)
- [Review the additional details](#)

Steps

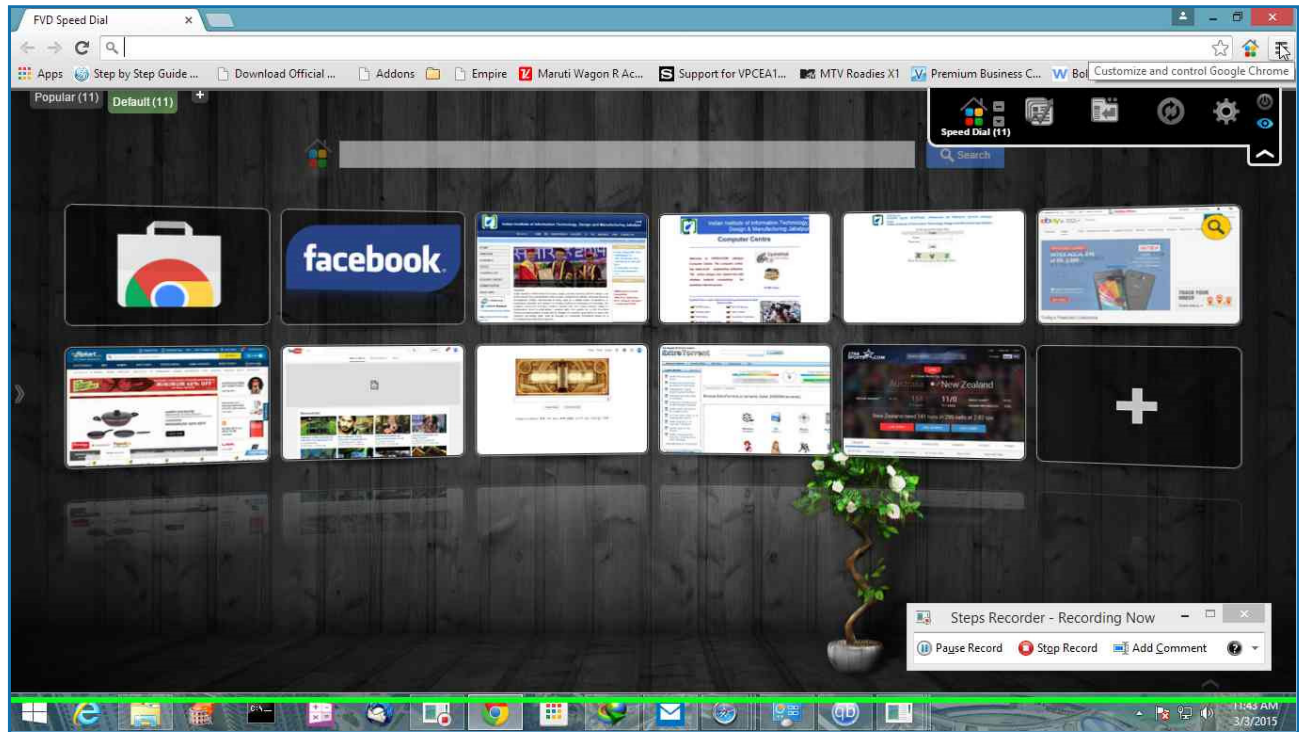
[Previous](#) [Next](#)

Step 1: (3/3/2015 11:43:07 AM) User left click on "Google Chrome (button)"



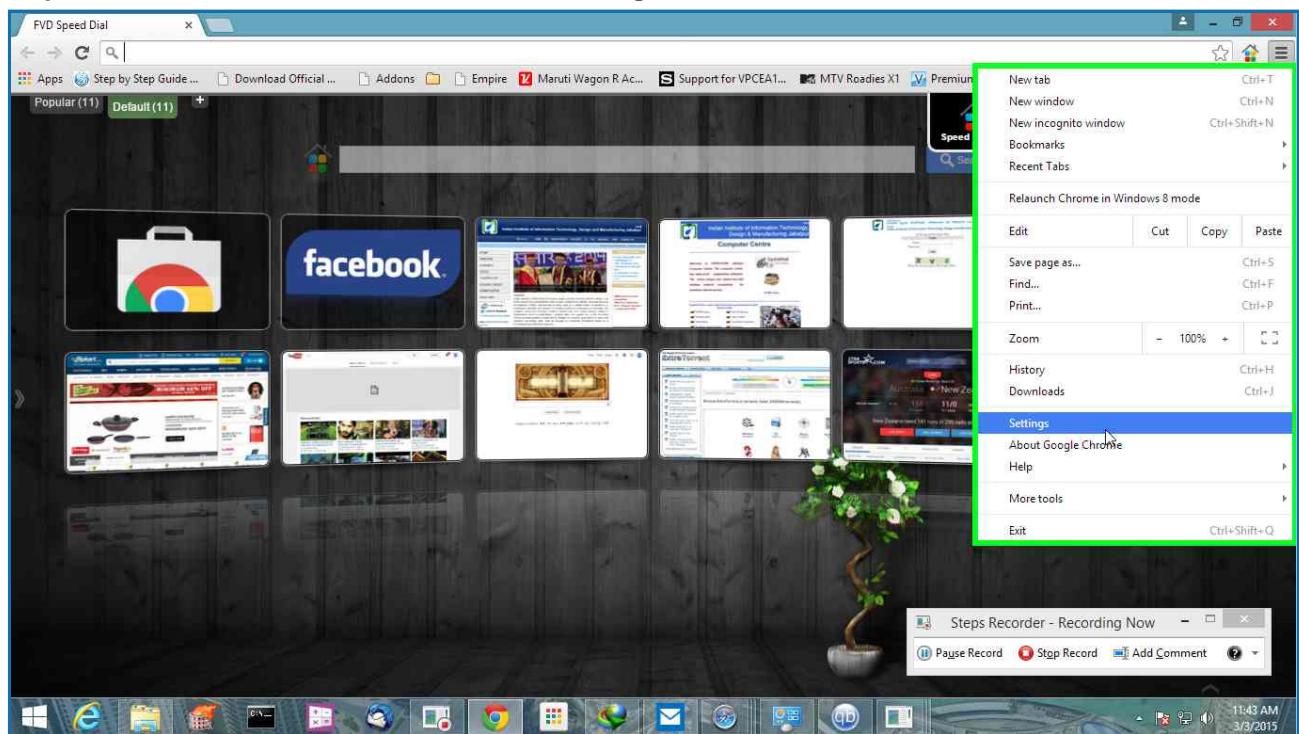
[Previous](#) [Next](#)

Step 2: (3/3/2015 11:43:11 AM) User left click on "Chrome (menu item)" in "FVD Speed Dial - Google Chrome"



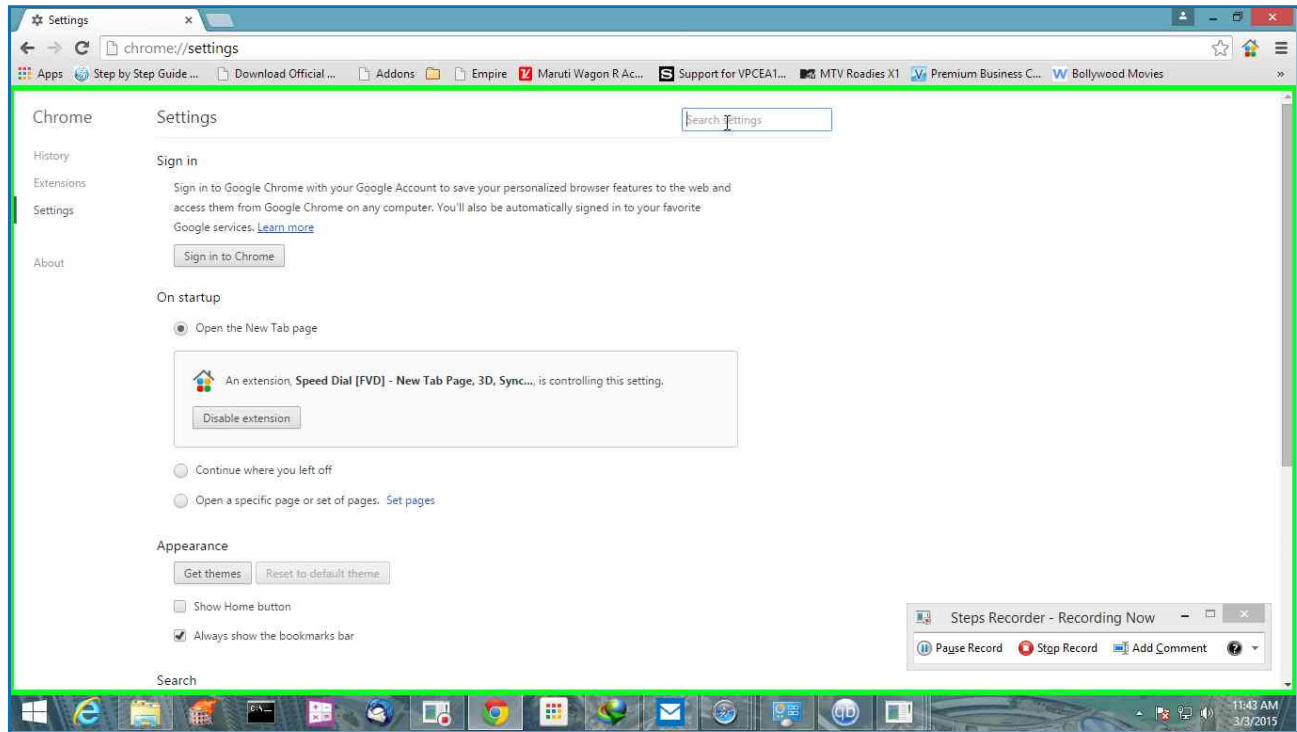
[Previous](#) [Next](#)

Step 3: (3/3/2015 11:43:14 AM) User left click on "Settings (menu item)"

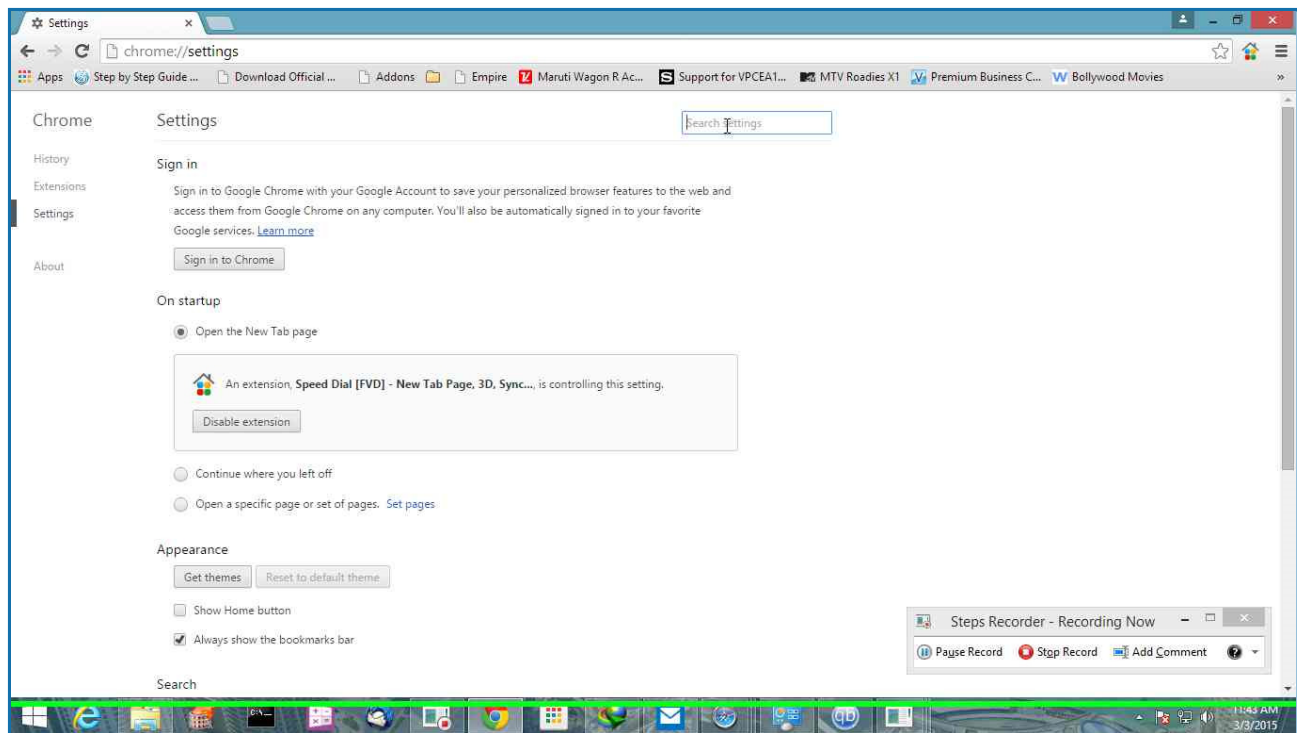


[Previous](#) [Next](#)

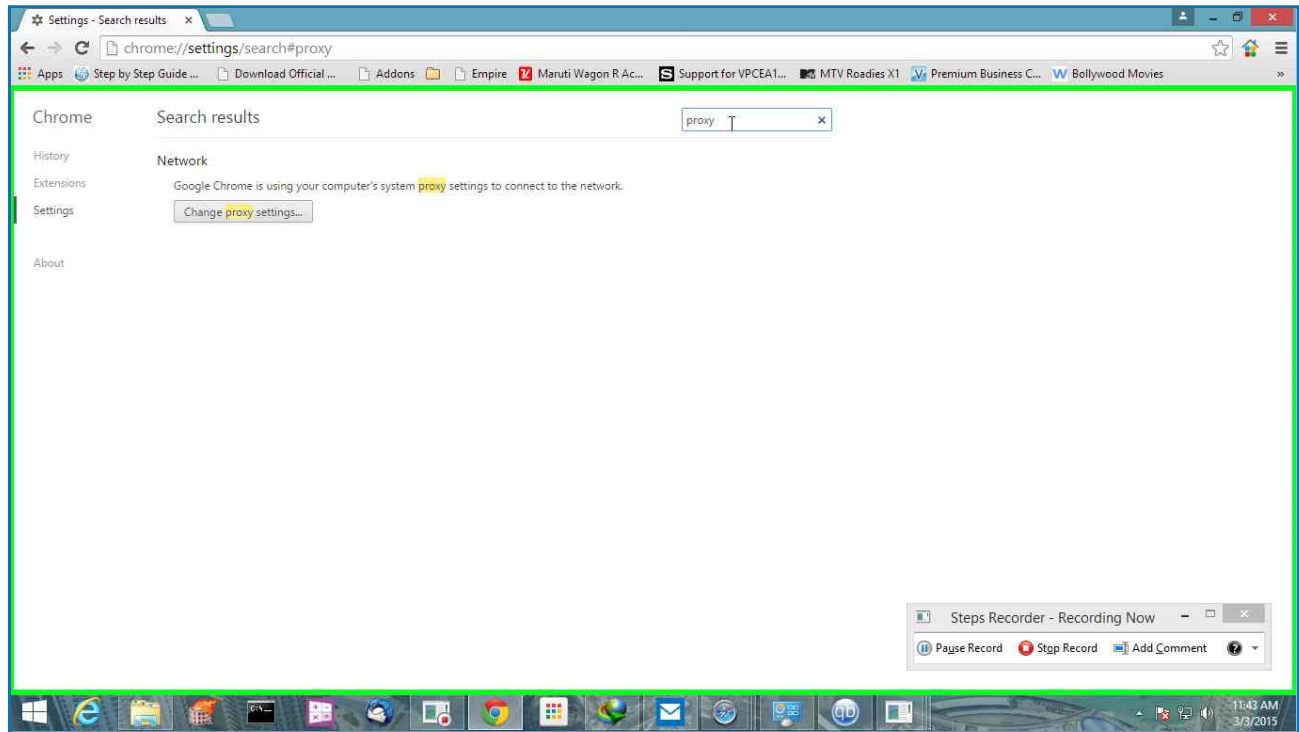
Step 4: (3/3/2015 11:43:16 AM) User left click on "Chrome Legacy Window (pane)" in "Settings - Google Chrome"

[Previous](#) [Next](#)

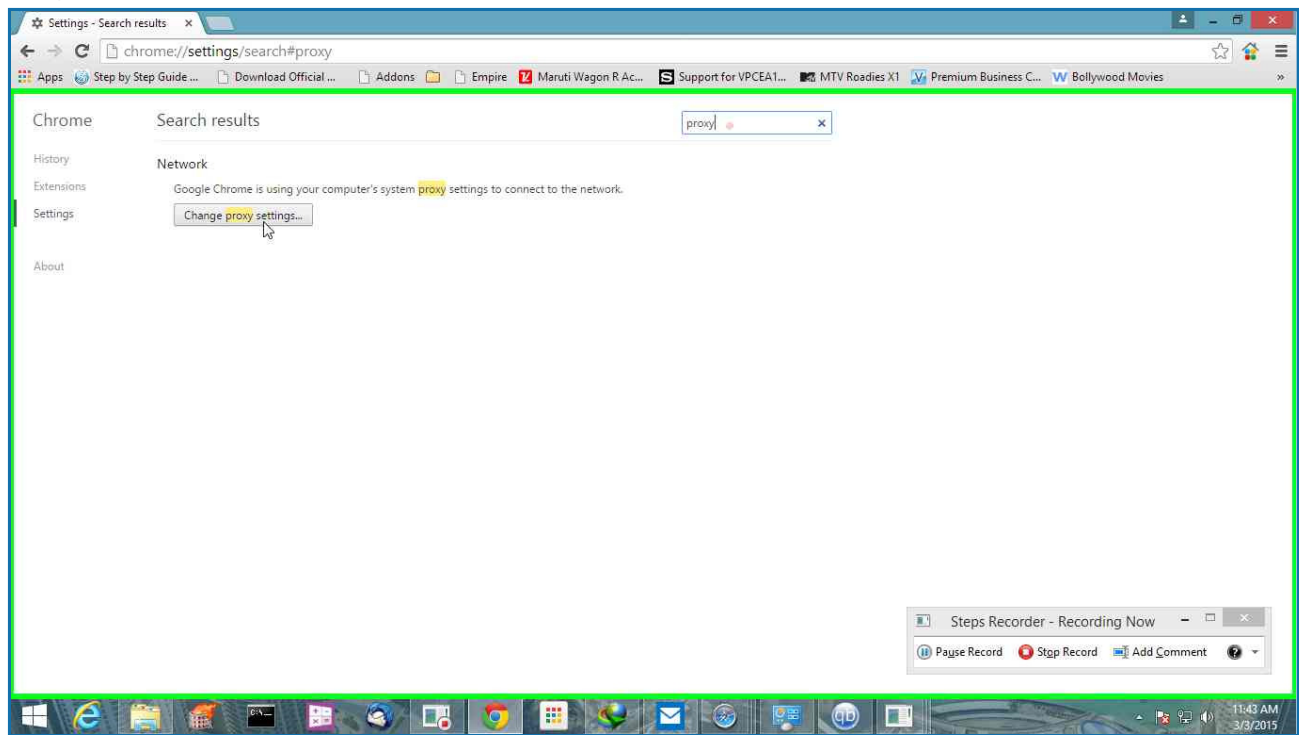
Step 5: (3/3/2015 11:43:17 AM) User keyboard input on "Settings - Google Chrome (window)" in "Settings - Google Chrome" [...]

[Previous](#) [Next](#)

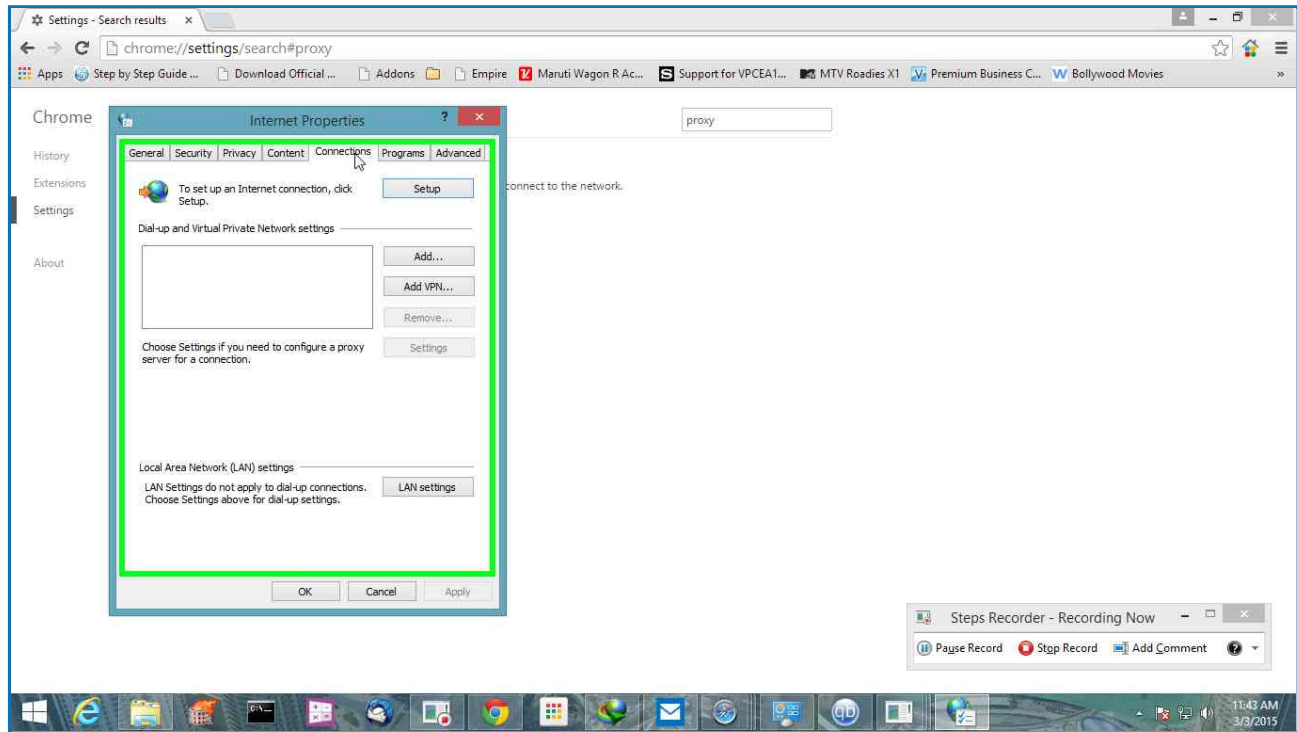
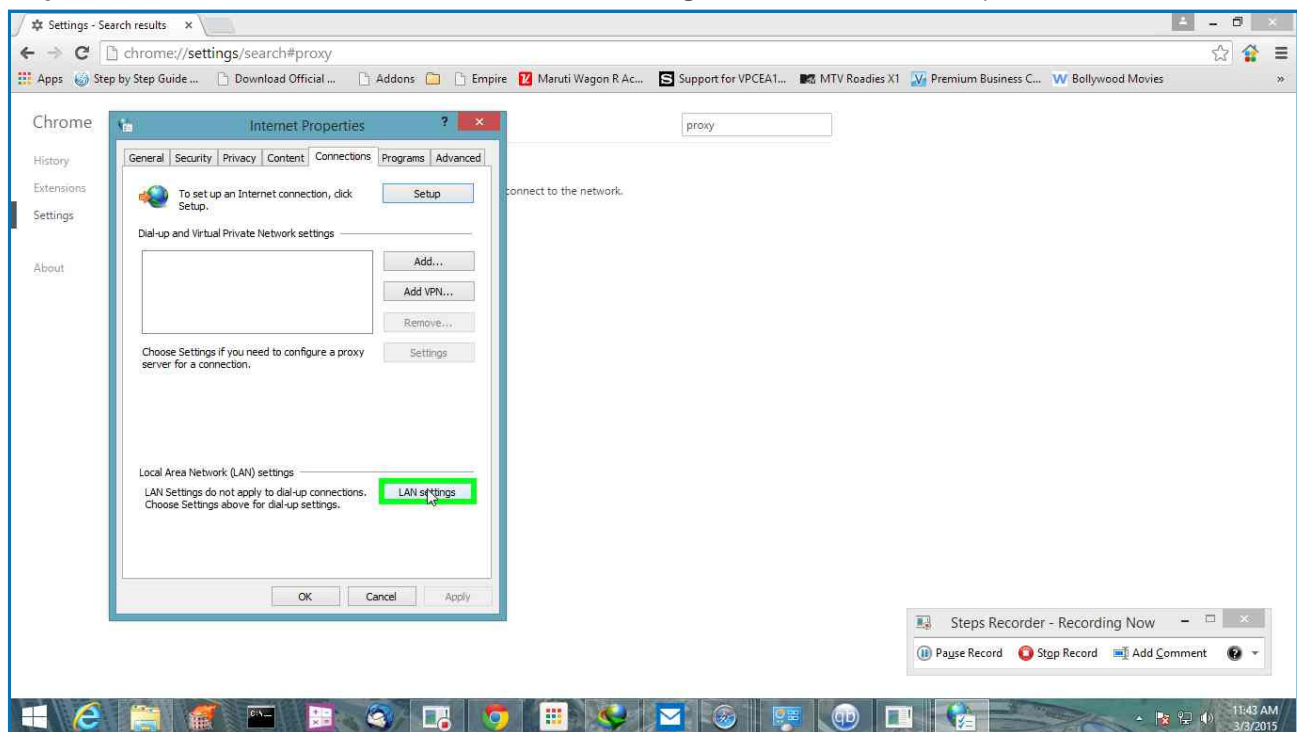
Step 6: (3/3/2015 11:43:24 AM) User left click on "Chrome Legacy Window (pane)" in "Settings - Search results - Google Chrome"

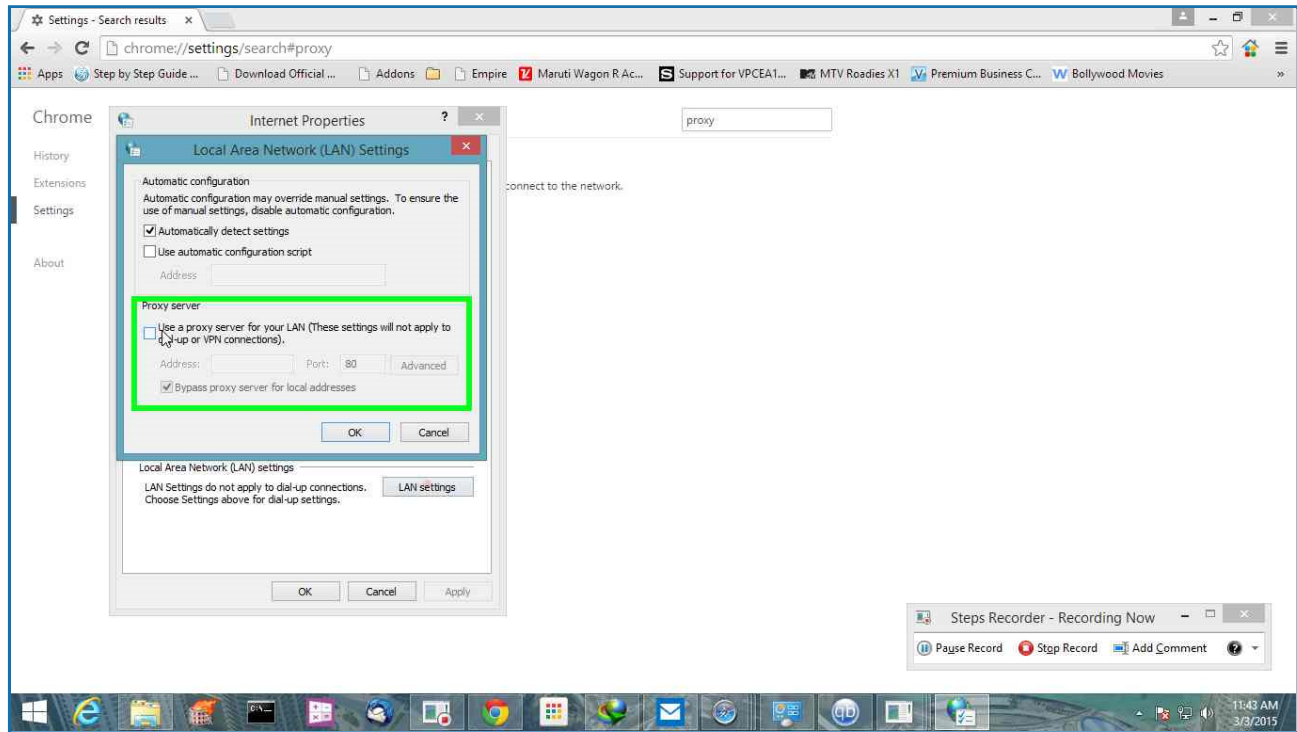
[Previous](#) [Next](#)

Step 7: (3/3/2015 11:43:25 AM) User left click on "Chrome Legacy Window (pane)" in "Settings - Search results - Google Chrome"

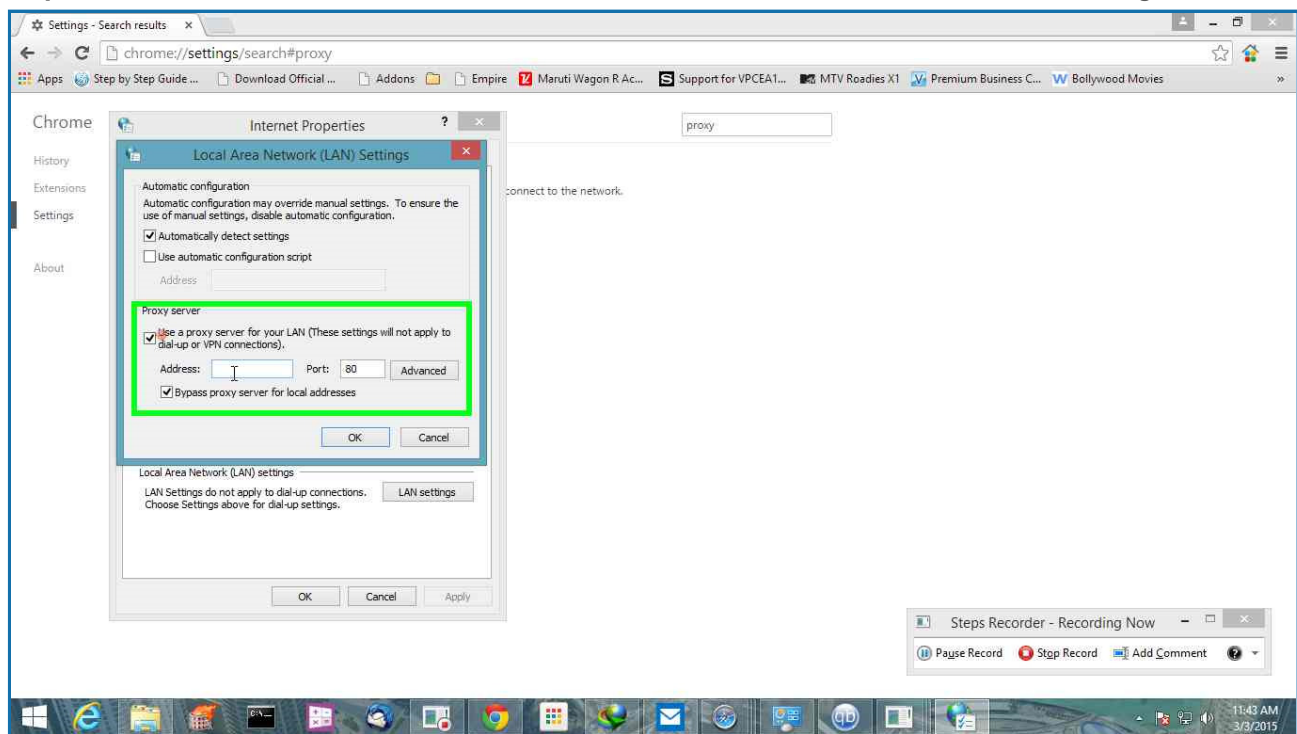
[Previous](#) [Next](#)

Step 8: (3/3/2015 11:43:26 AM) User left click on "Connections (tab item)" in "Internet Properties"

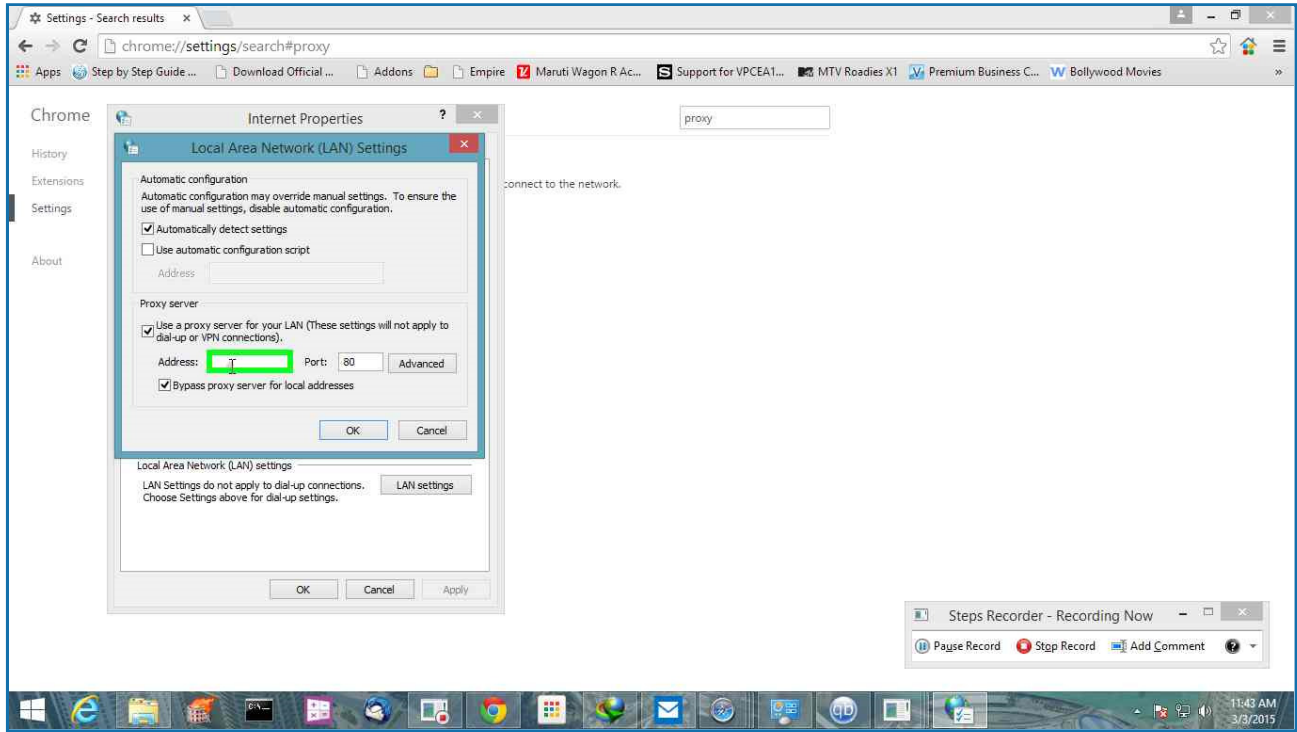
[Previous](#) [Next](#)**Step 9: (3/3/2015 11:43:27 AM)** User left click on "LAN settings (button)" in "Internet Properties"[Previous](#) [Next](#)**Step 10: (3/3/2015 11:43:28 AM)** User left click on "Use a proxy server for your LAN (These settings will not apply to dial-up or VPN connections). (check box)" in "Local Area Network (LAN) Settings"

[Previous](#) [Next](#)

Step 11: (3/3/2015 11:43:29 AM) User left click on "Address: (edit)" in "Local Area Network (LAN) Settings"

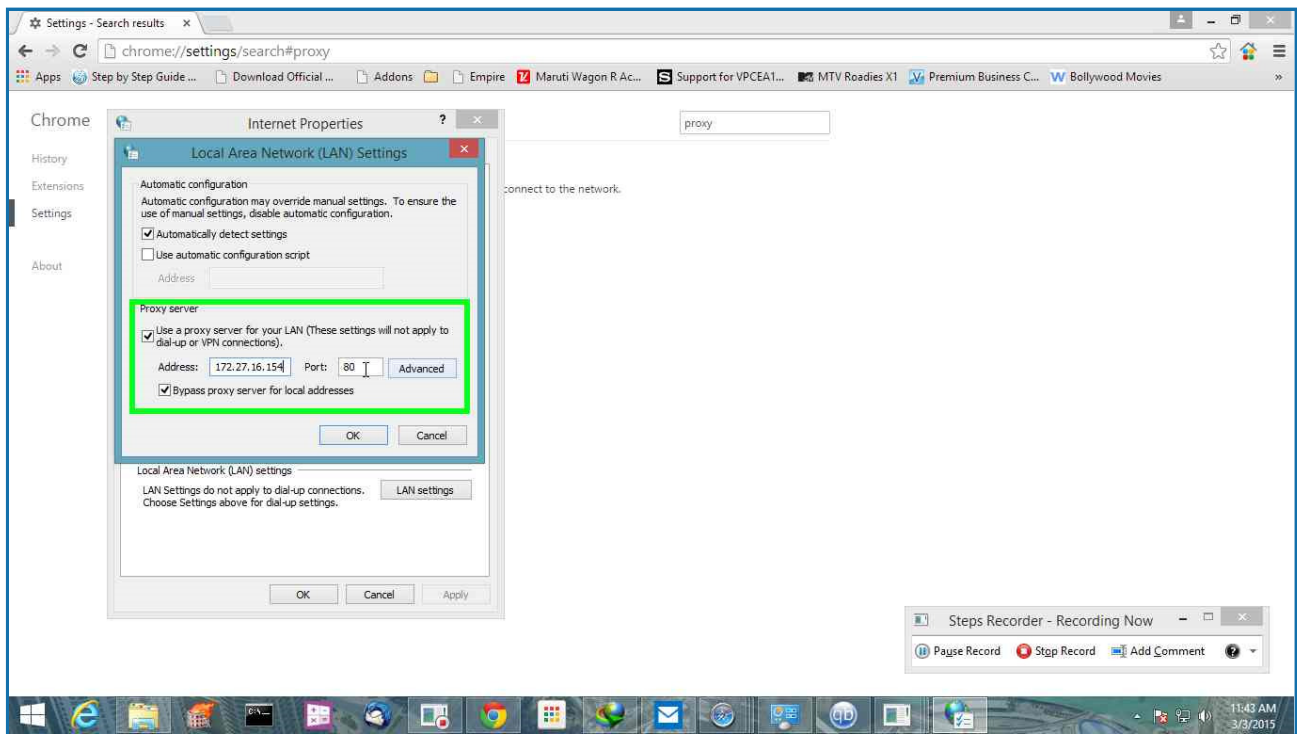
[Previous](#) [Next](#)

Step 12: (3/3/2015 11:43:30 AM) User keyboard input on "Address: (edit)" in "Local Area Network (LAN) Settings" [...]



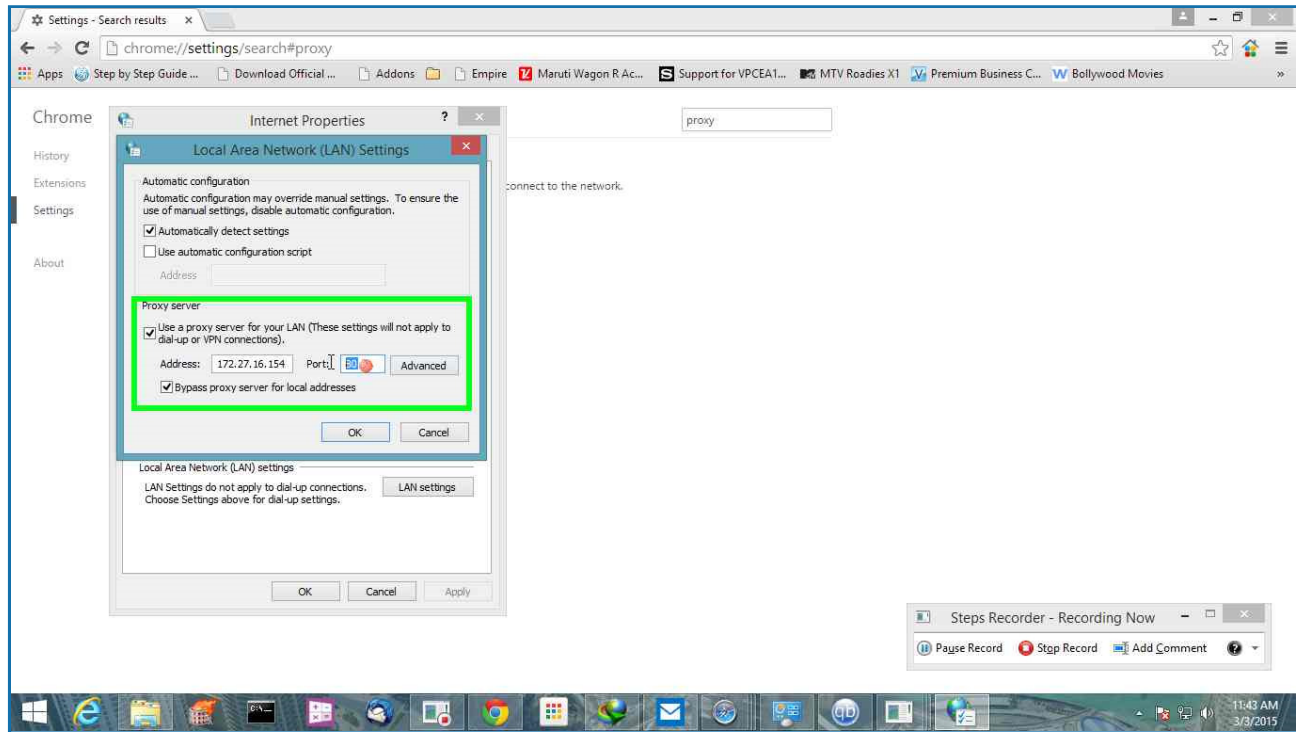
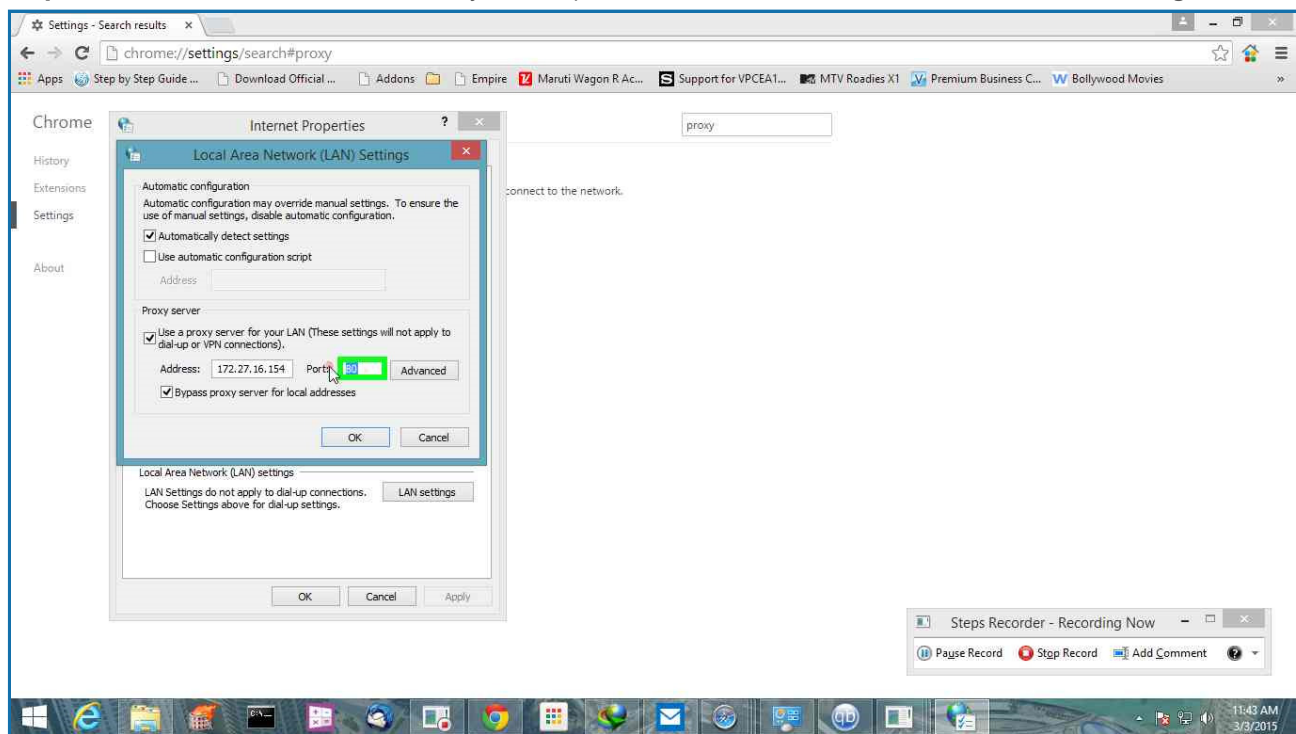
[Previous](#) [Next](#)

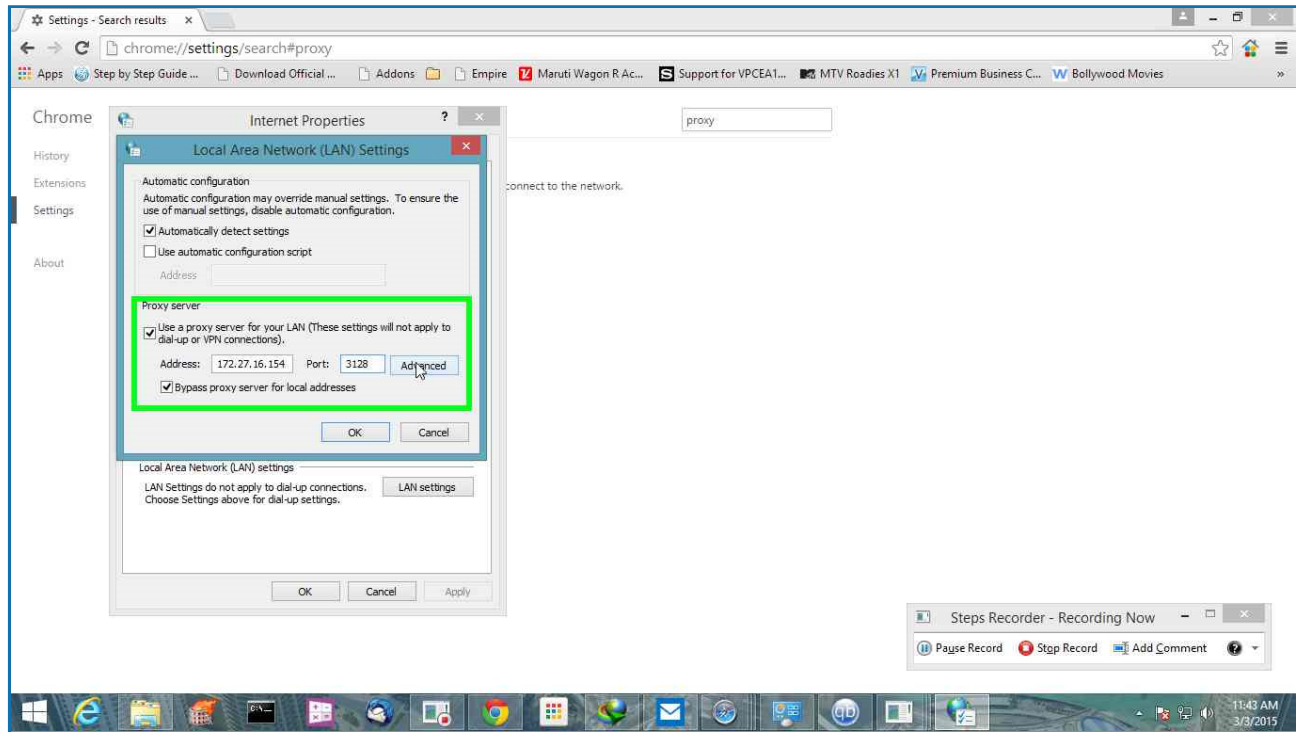
Step 13: (3/3/2015 11:43:35 AM) User mouse drag start on "Port: (edit)" in "Local Area Network (LAN) Settings"



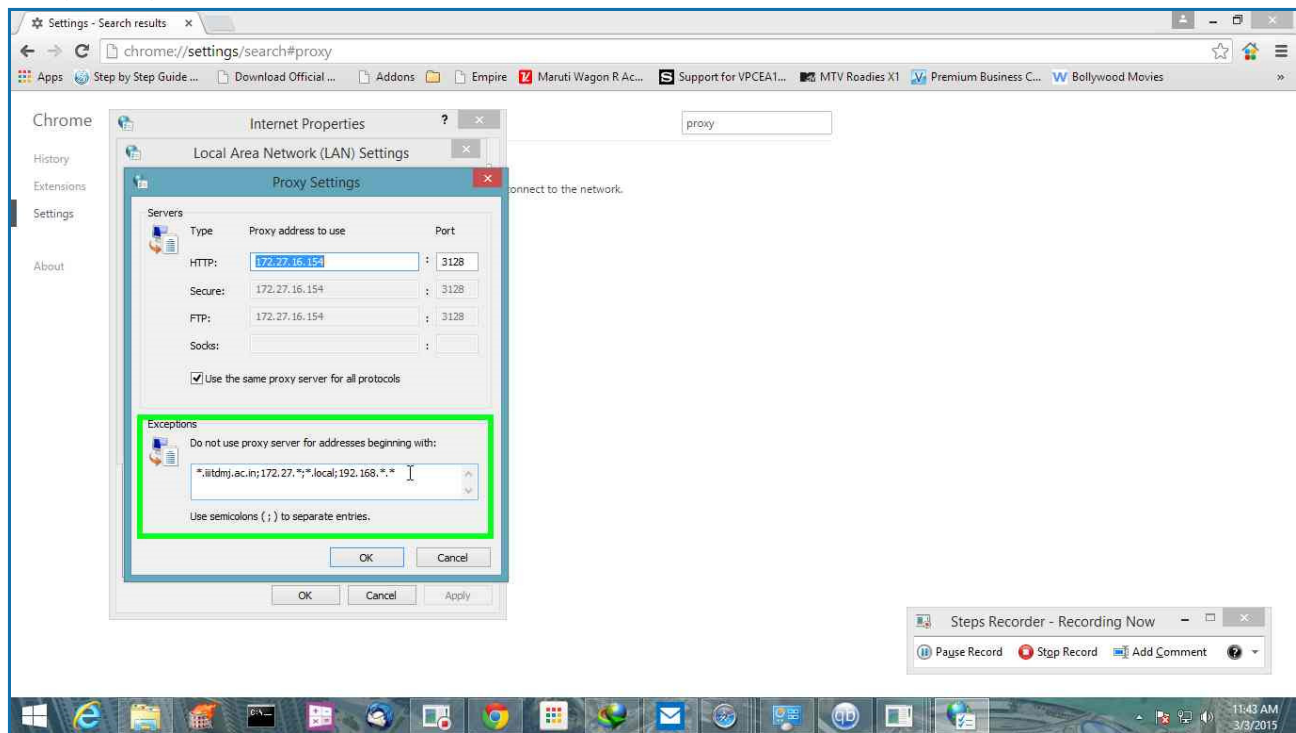
[Previous](#) [Next](#)

Step 14: (3/3/2015 11:43:35 AM) User mouse drag end on "Port: (text)" in "Local Area Network (LAN) Settings"

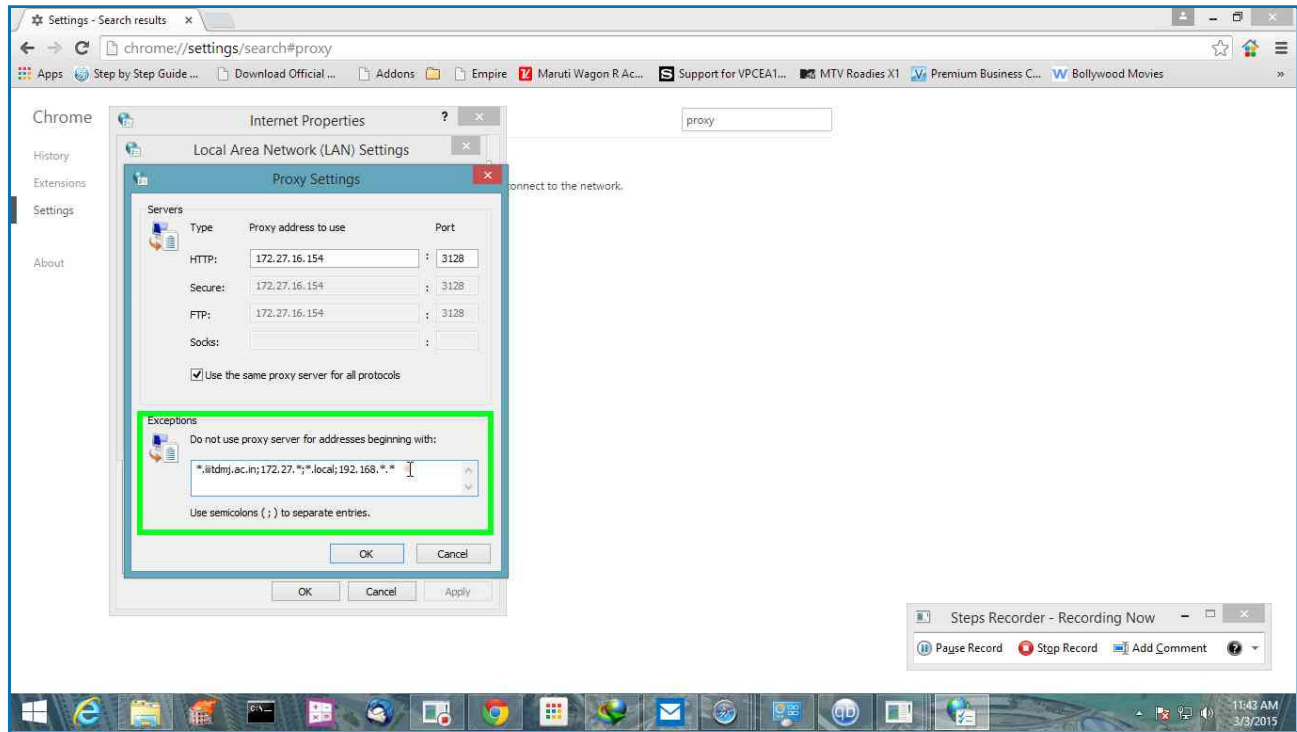
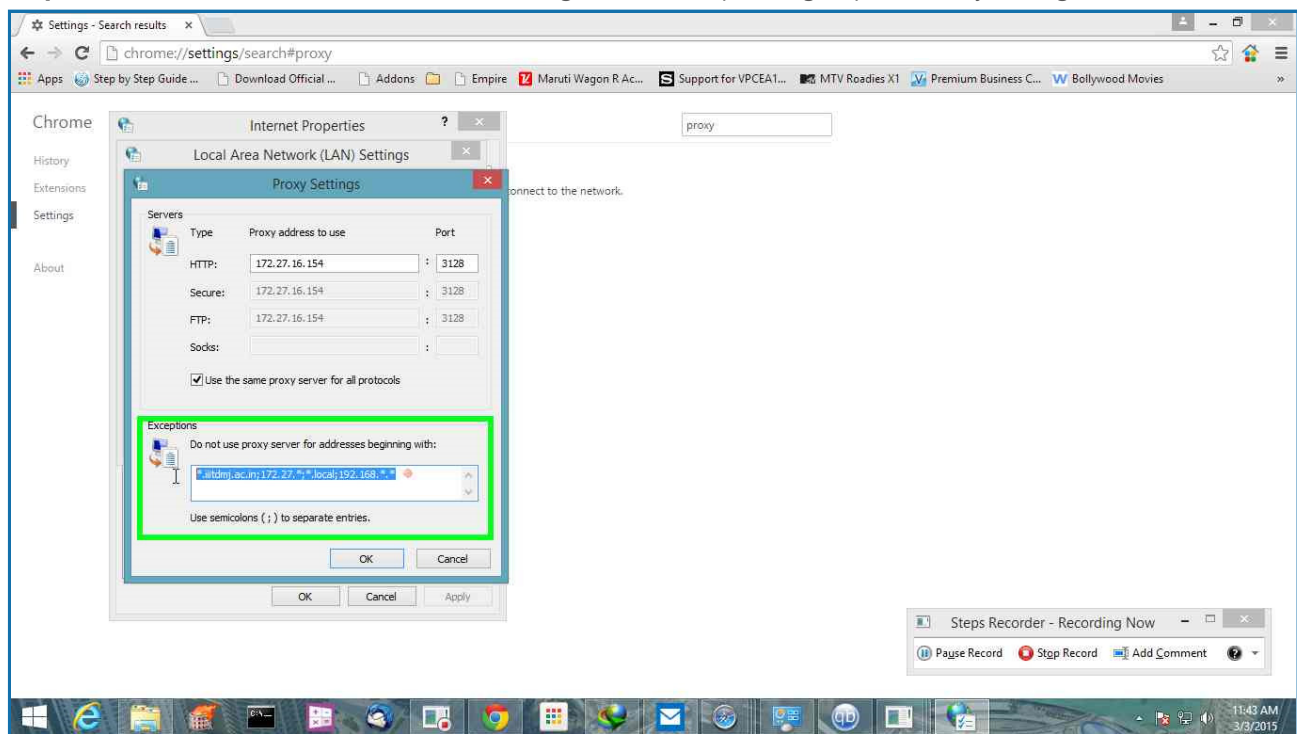
[Previous](#) [Next](#)**Step 15: (3/3/2015 11:43:36 AM)** User keyboard input on "Port: (edit)" in "Local Area Network (LAN) Settings" [...][Previous](#) [Next](#)**Step 16: (3/3/2015 11:43:38 AM)** User left click on "Advanced (button)" in "Local Area Network (LAN) Settings"

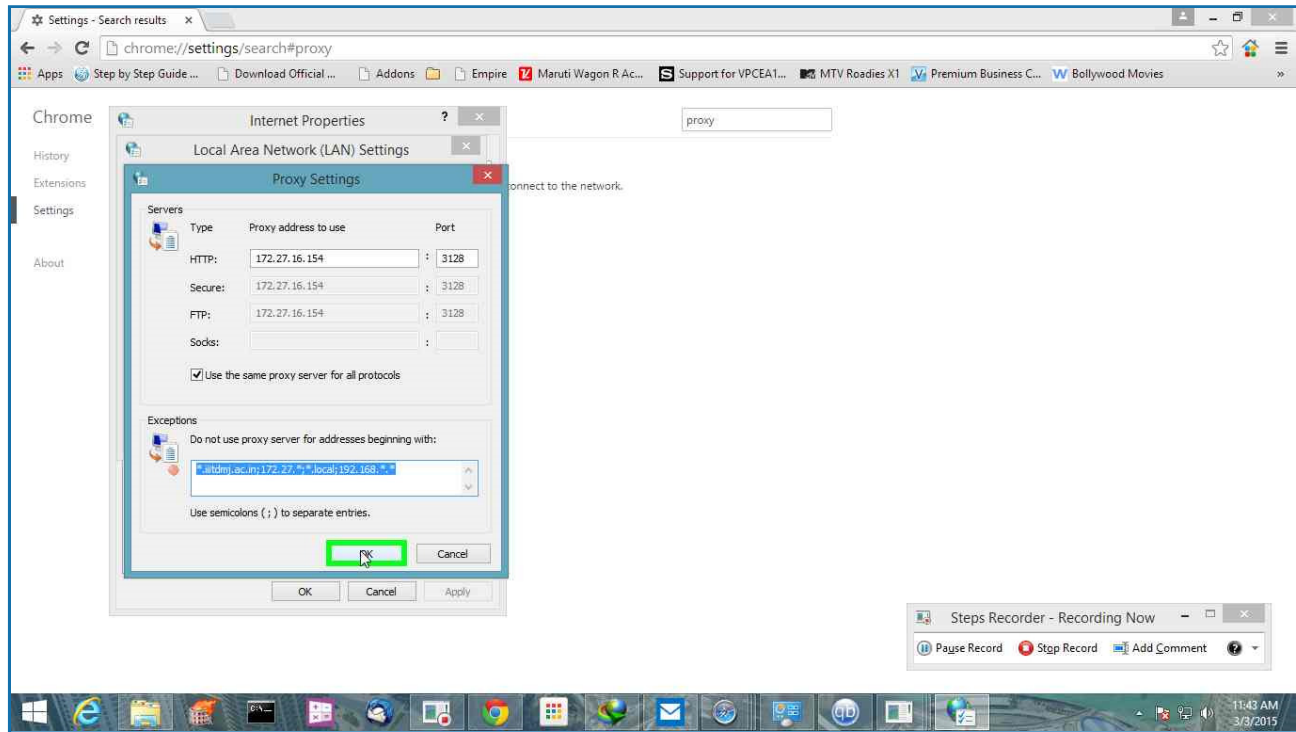
[Previous](#) [Next](#)

Step 17: (3/3/2015 11:43:39 AM) User left click on "Do not use proxy server for addresses beginning with: (edit)" in "Proxy Settings"

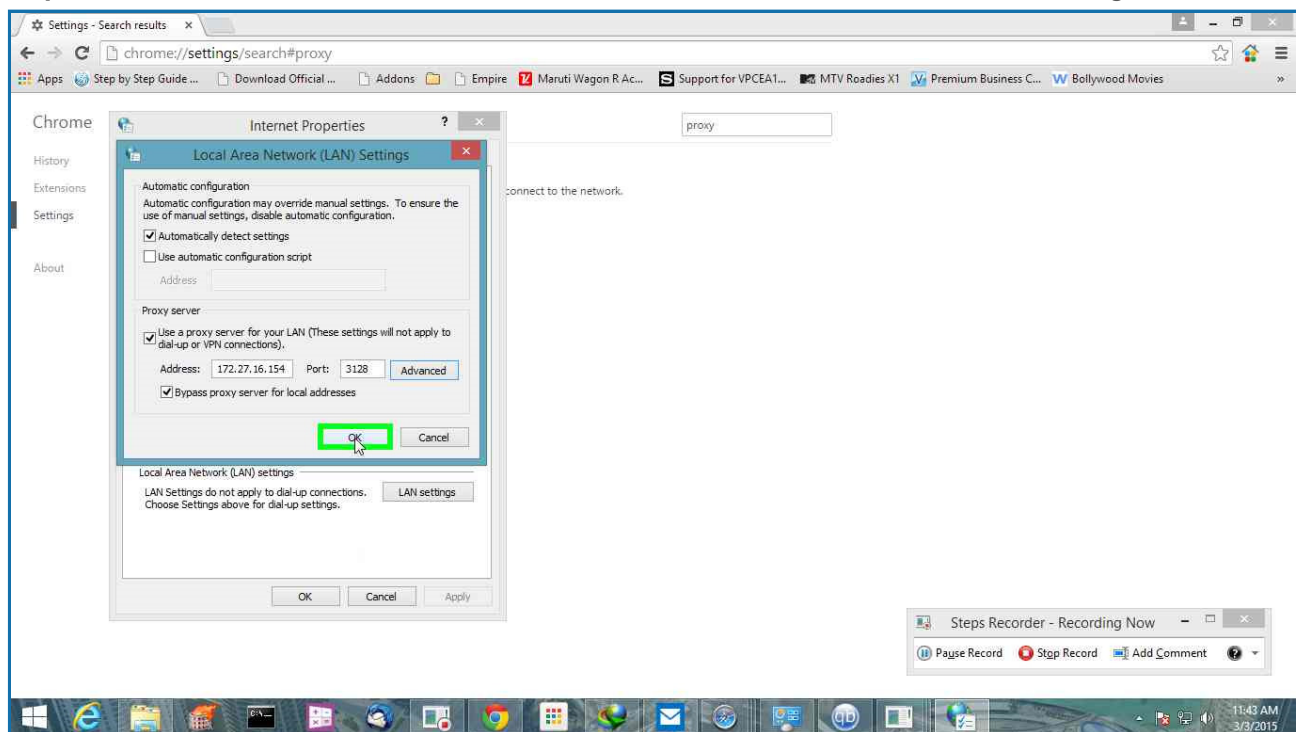
[Previous](#) [Next](#)

Step 18: (3/3/2015 11:43:40 AM) User mouse drag start on "Do not use proxy server for addresses beginning with: (edit)" in "Proxy Settings"

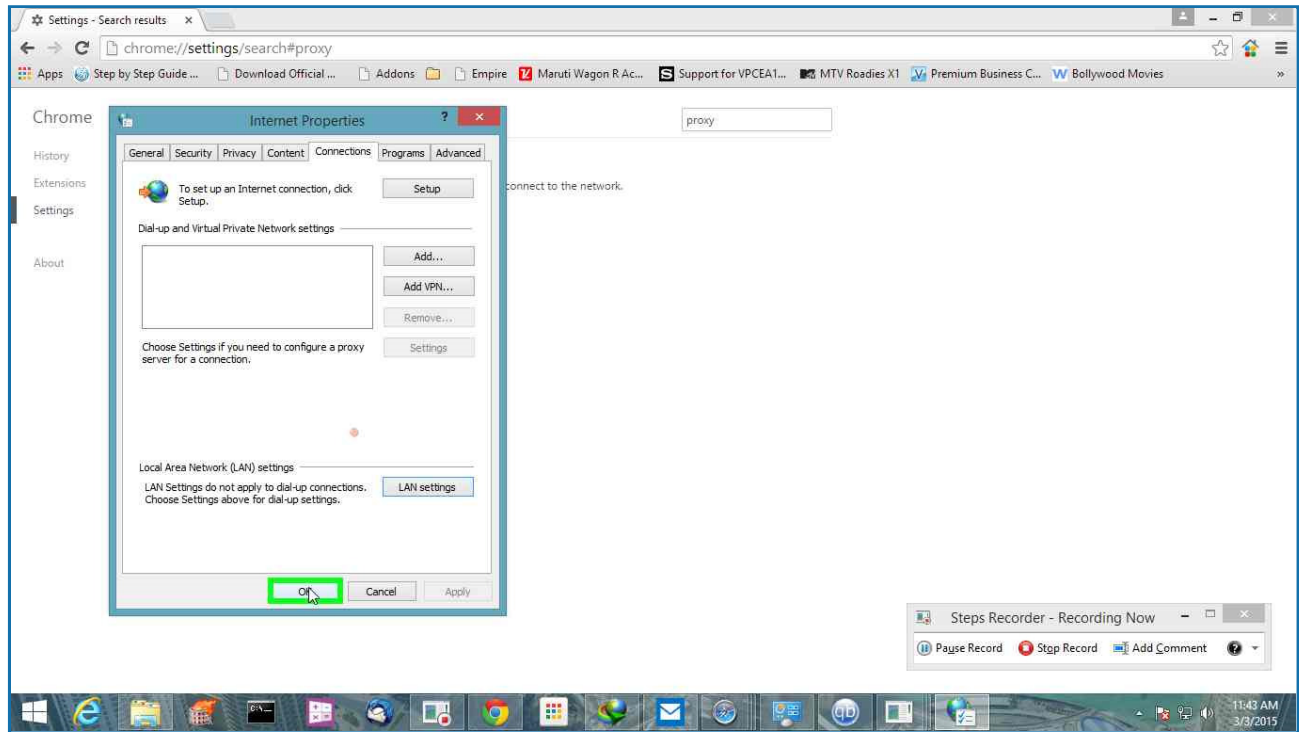
[Previous](#) [Next](#)**Step 19: (3/3/2015 11:43:41 AM)** User mouse drag end on "Exceptions (group)" in "Proxy Settings"[Previous](#) [Next](#)**Step 20: (3/3/2015 11:43:41 AM)** User left click on "OK (button)" in "Proxy Settings"

[Previous](#) [Next](#)

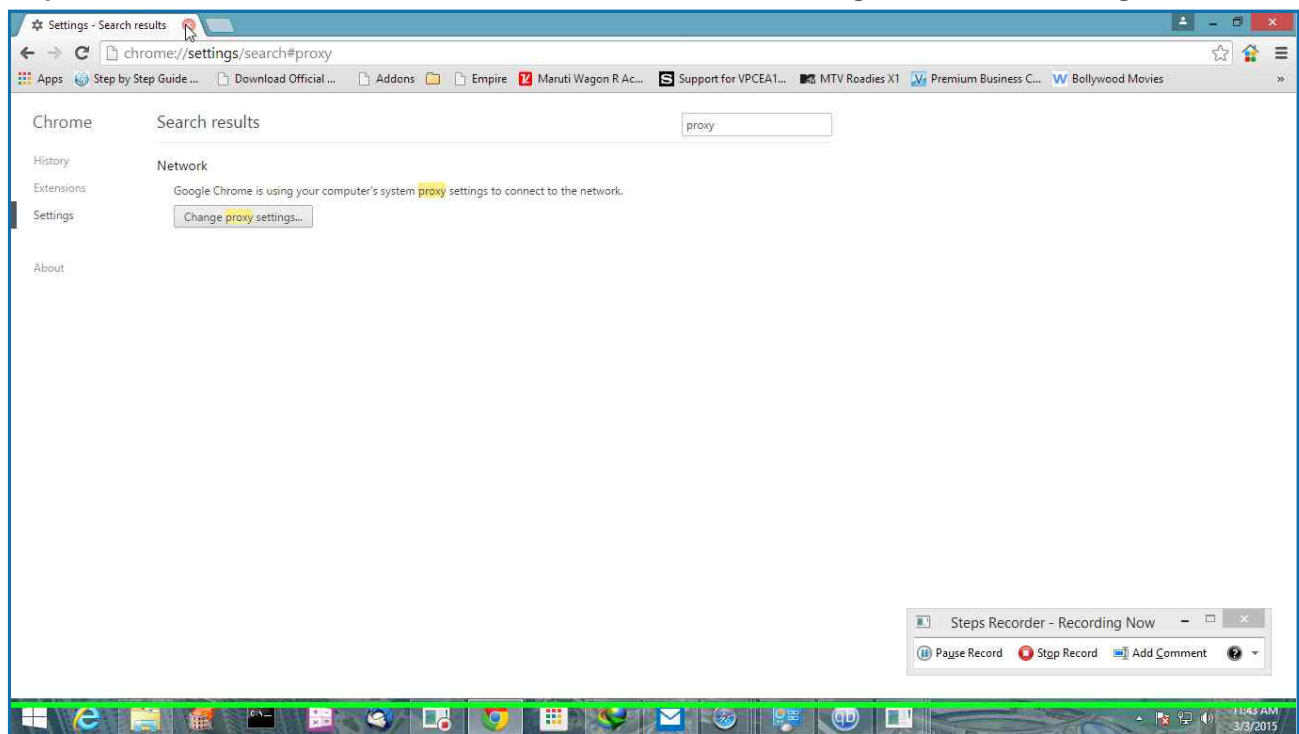
Step 21: (3/3/2015 11:43:42 AM) User left click on "OK (button)" in "Local Area Network (LAN) Settings"

[Previous](#) [Next](#)

Step 22: (3/3/2015 11:43:43 AM) User left click on "OK (button)" in "Internet Properties"

[Previous](#) [Next](#)

Step 23: (3/3/2015 11:43:46 AM) User left click on "Close (button)" in "Settings - Search results - Google Chrome"



[Return to top of page...](#)

[Additional Details](#)

The following section contains the additional details that were recorded.

These details help accurately identify the programs and UI you used in this recording.

This section may contain text that is internal to programs that only very advanced users or programmers may understand.

Please review these details to ensure that they do not contain any information that you would not like others to see.

```
Recording Session: 3/3/2015 11:43:05 AM - 11:43:47 AM

Recorded Steps: 23, Missed Steps: 0, Other Errors: 0

Operating System: 9600.17630.amd64fre.winblue_r7.150109-2022 6.3.0.0.2.48

Step 1: User left click on "Google Chrome (button)"
Program: Windows Explorer, 6.3.9600.17031 (winblue_gdr.140221-1952), Microsoft Corporation, E
UI Elements: Google Chrome, Running applications, MSTaskListWClass, Running applications, MST

Step 2: User left click on "Chrome (menu item)" in "FVD Speed Dial - Google Chrome"
Program: Google Chrome, 40.0.2214.115, Google Inc., CHROME.EXE, CHROME.EXE
UI Elements: Chrome, Google Chrome Toolbar, Google Chrome, FVD Speed Dial - Google Chrome, Ch

Step 3: User left click on "Settings (menu item)"
Program: Google Chrome, 40.0.2214.115, Google Inc., CHROME.EXE, CHROME.EXE
UI Elements: Settings, Chrome_WidgetWin_2, FVD Speed Dial - Google Chrome, Chrome_WidgetWin_1

Step 4: User left click on "Chrome Legacy Window (pane)" in "Settings - Google Chrome"
Program: Google Chrome, 40.0.2214.115, Google Inc., CHROME.EXE, CHROME.EXE
UI Elements: Chrome Legacy Window, Chrome_RenderWidgetHostHWND, Settings - Google Chrome, Chr

Step 5: User keyboard input on "Settings - Google Chrome (window)" in "Settings - Google Chro
Program: Google Chrome, 40.0.2214.115, Google Inc., CHROME.EXE, CHROME.EXE
UI Elements: Settings - Google Chrome, Chrome_WidgetWin_1

Step 6: User left click on "Chrome Legacy Window (pane)" in "Settings - Search results - Goo
Program: Google Chrome, 40.0.2214.115, Google Inc., CHROME.EXE, CHROME.EXE
UI Elements: Chrome Legacy Window, Chrome_RenderWidgetHostHWND, Settings - Search results - G

Step 7: User left click on "Chrome Legacy Window (pane)" in "Settings - Search results - Goo
Program: Google Chrome, 40.0.2214.115, Google Inc., CHROME.EXE, CHROME.EXE
UI Elements: Chrome Legacy Window, Chrome_RenderWidgetHostHWND, Settings - Search results - G

Step 8: User left click on "Connections (tab item)" in "Internet Properties"
Program: Windows host process (Rundll32), 6.3.9600.16384 (winblue_rtm.130821-1623), Microsoft
```

[Return to top of page..](#)

